



**REGIONAL SPECIALISED METEOROLOGICAL CENTRE-TROPICAL CYCLONES, NEW DELHI
TROPICAL WEATHER OUTLOOK**

DEMS-RSMC SPECIAL TROPICAL CYCLONES NEW DELHI DATED 19.12.2022

TROPICAL WEATHER OUTLOOK FOR NORTH INDIAN OCEAN (THE BAY OF BENGAL AND THE ARABIAN SEA) VALID FOR NEXT 120 HOURS ISSUED AT 0600 UTC OF 19.12.2022 BASED ON 0300 UTC OF 19.12.2022.

BAY OF BENGAL:

YESTERDAY'S LOW PRESSURE AREA OVER CENTRAL PARTS OF SOUTH BAY OF BENGAL & ADJOINING EAST EQUATORIAL INDIAN OCEAN PERSISTED OVER SAME REGION AT 0300 UTC OF TODAY THE 19TH DECEMBER. IT IS LIKELY TO MOVE WEST-NORTHWESTWARDS SLOWLY TOWARDS SRI-LANKA COAST DURING NEXT 2 DAYS.

AS PER SATELLITE IMAGERY CLOUDS ASSOCIATED WITH LOW PRESSURE AREA ARE SCATTERED TO BROKEN LOW AND MEDIUM CLOUDS WITH EMBEDDED INTENSE TO VERY INTENSE CONVECTION LAY OVER SOUTH BAY OF BENGAL ADJOINING EQUATORIAL INDIAN OCEAN BET LAT 3.0N TO 10.0N LONG 80.0E TO 90.0E. MINIMUM CTT MINUS 93°C.

SCATTERED TO BROKEN LOW AND MEDIUM CLOUDS WITH EMBEDDED INTENSE TO VERY INTENSE CONVECTION LAY OVER SOUTH BAY OF BENGAL AND SOUTH ANDAMAN SEA. SCATTERED LOW AND MEDIUM CLOUDS WITH EMBEDDED MODERATE TO INTENSE CONVECTION OVER CENTRAL BAY OF BENGAL AND NORTH ANDAMAN SEA. SCATTERED LOW AND MEDIUM CLOUDS WITH EMBEDDED WEAK TO MODERATE CONVECTION LAY OVER NORTHEAST BAY OF BENGAL.

PROBABILITY OF CYCLOGENESIS (FORMATION OF DEPRESSION) DURING NEXT 120 HRS:

24 HOURS	24-48 HOURS	48-72 HOURS	72-96 HOURS	96-120 HOURS
NIL	NIL	NIL	NIL	NIL

ARABIAN SEA:

YESTERDAY'S WELL MARKED LOW PRESSURE AREA OVER WESTCENTRAL ARABIAN SEA HAS WEAKENED INTO A LOW PRESSURE AREA OVER THE SAME REGION AT 0300 UTC OF TODAY THE 19TH DECEMBER.

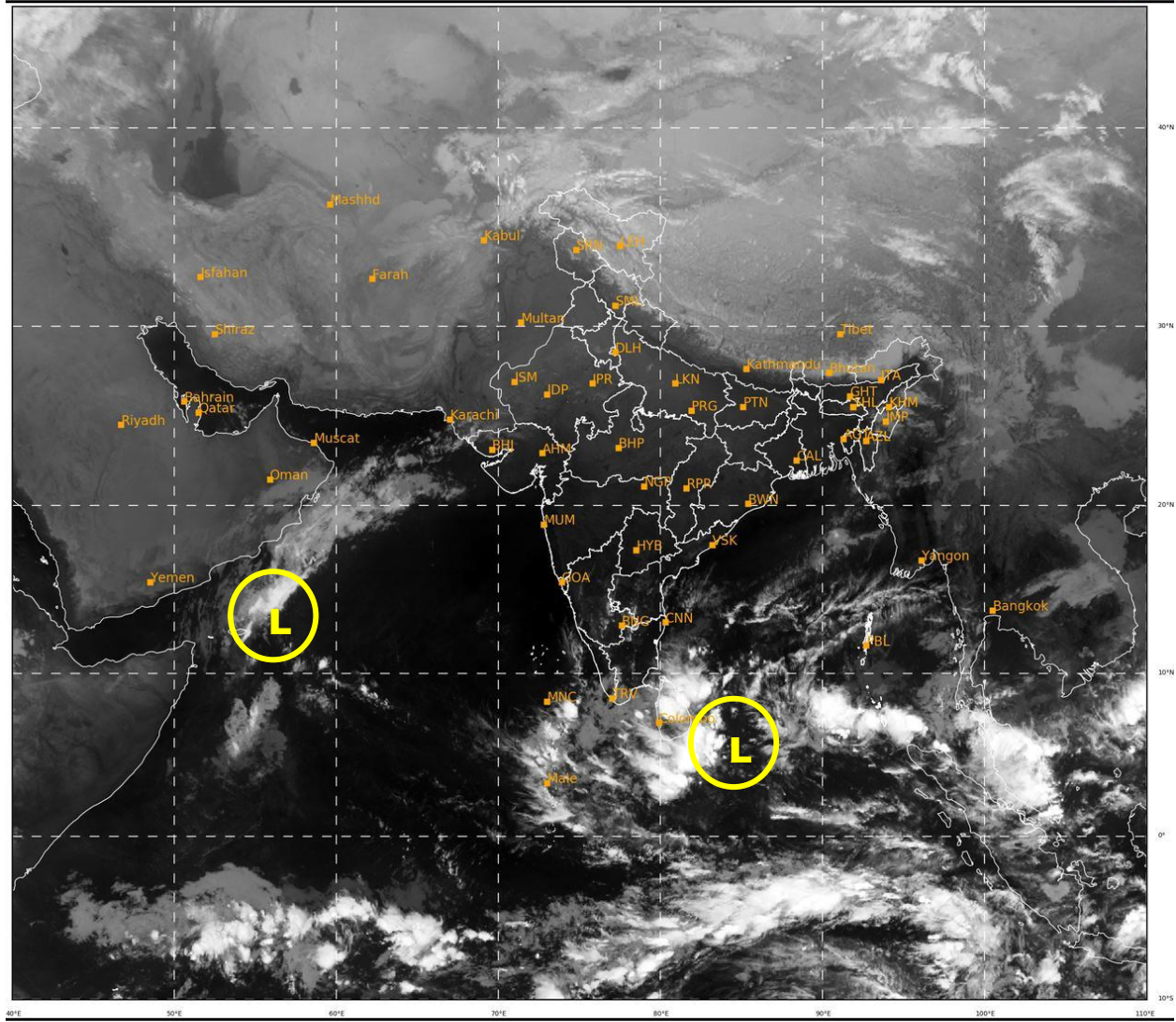
SCATTERED LOW AND MEDIUM CLOUDS WITH EMBEDDED INTENSE TO VERY INTENSE CONVECTION OVER SOUTHEAST ARABIAN SEA. SCATTERED LOW AND MEDIUM CLOUDS WITH EMBEDDED MODERATE TO INTENSE CONVECTION OVER WESTCENTRAL & SOUTHWEST ARABIAN SEA AND COMORIN AREA. SCATTERED LOW AND MEDIUM CLOUDS WITH EMBEDDED WEAK TO MODERATE CONVECTION OVER NORTH ARABIAN SEA.

PROBABILITY OF CYCLOGENESIS (FORMATION OF DEPRESSION) DURING NEXT 120 HRS:

24 HOURS	24-48 HOURS	48-72 HOURS	72-96 HOURS	96-120 HOURS
NIL	NIL	NIL	NIL	NIL

Remarks:

NIL



523

934

IMD, DELHI

WML- WELL MARKED LOW PRESSURE AREA

L- LOW PRESSURE AREA